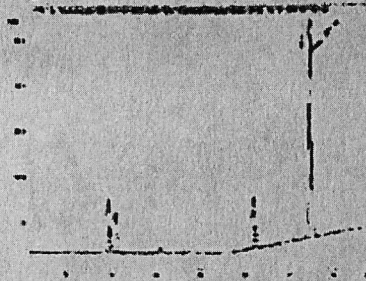


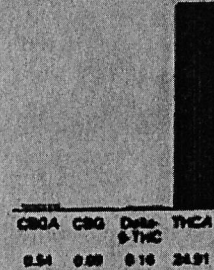
Sample 150-042123-143  
 Dolato (THCA Hemp Flower)  
 Sample Submitted 04-21-2023, Report Date 04-21-2023

**Dolato (THCA Hemp Flower)**  
 Pure Material Flower

Chromatogram



Cannabinoid Profile



Cannabinoid Profile by HPLC

**0.16%**  
 Delta-9-THC

**0.00%**  
 CBD

**25.70%**  
 Total Cannabinoids

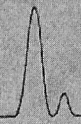
Cannabinoid	% wt	mg/g
CBGA	0.54	5.4
CBG	0.09	0.9
Delta-9-THC	0.16	1.6
THCA	24.91	249.1
<b>Total Cannabinoids</b>	<b>25.70</b>	<b>257.0</b>
Calculated Total THC	22.01	220.06
Calculated CBD Yield	0.00	0.00
Calculated Total THC = Delta-9-THC + 0.877 * THCA		
Calculated Maximum CBD Yield = CBD + 0.877 * CBGA		

Marin Analytics, LLC  
 250 Bol Mann Keys Blvd, Suite D4  
 Nevada, CA 94549

415-888-6477 / sarabiancalder1@gmail.com

*Sara Biancalderi*  
 Sara Biancalderi  
 Chief Scientist

This report has been tested by Marin Analytics, LLC using state testing methodologies and a quality system. Values reported herein only pertain to the sample tested. Marin Analytics, LLC makes no claims as to the efficacy, safety or other data associated with any substance or any substance reported herein. This Certificate shall not be reproduced, copied or full, without the written approval of Marin Analytics, LLC. Copyright 2023 Marin Analytics, LLC All Rights Reserved.



Sample 150-011823-134

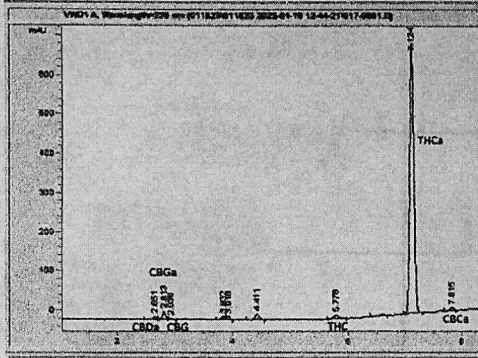
Dante's Inferno

Sample Submitted: 01-18-2023; Report Date: 01-18-2023

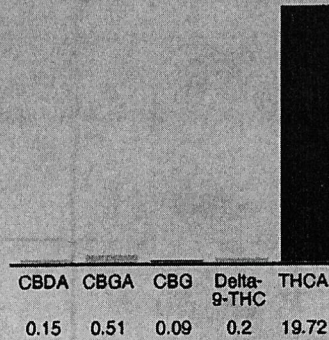
Dante's Inferno

Plant Material: Flower

Chromatogram



Cannabinoid Profile



Cannabinoid Profile by HPLC

**0.20%**  
Delta-9-THC

**0.00%**  
CBD

**20.67%**  
Total Cannabinoids

Cannabinoid	% wt	mg/g
CBDA	0.15	1.5
CBGA	0.51	5.1
CBG	0.09	0.9
Delta-9-THC	0.2	2.0
THCA	19.72	197.2
<b>Total Cannabinoids</b>	<b>20.67</b>	<b>206.7</b>
<b>Calculated Delta-9-THC Yield</b>	<b>17.49</b>	<b>174.94</b>
<b>Calculated CBD Yield</b>	<b>0.13</b>	<b>1.32</b>
Calculated Maximum Delta-9-THC Yield = Delta-9-THC + 0.877 * THCA		
Calculated Maximum CBD Yield = CBD + 0.877 * CBDA		

**Marin Analytics, LLC**  
250 Bel Marin Keys Blvd, Suite D4  
Novato, CA 94949

415-936-6477 / sarabiancalana1@gmail.com

*Sara Biancalana*

**Sara Biancalana**  
Chief Scientist

This sample has been tested by Marin Analytics, LLC using valid testing methodologies and a quality system. Values reported relate only to the sample tested. Marin Analytics, LLC makes no claims as to the efficacy, safety or other risks associated with any detected or non-detected levels of any compounds reported herein. This Certificate shall not be reproduced except in full, without the written approval of Marin Analytics, LLC. Copyright 2022 Marin Analytics, LLC All Rights Reserved.



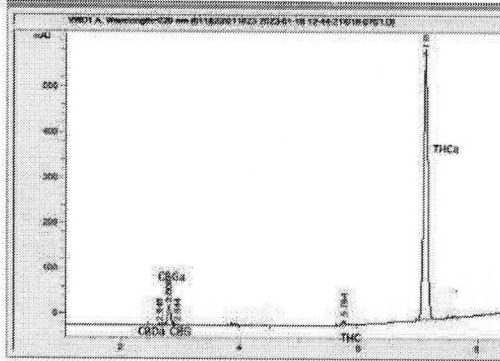
Fruity Pebbles (THCA Hemp Flower)

Sample Submitted: 01-18-2023; Report Date: 01-18-2023

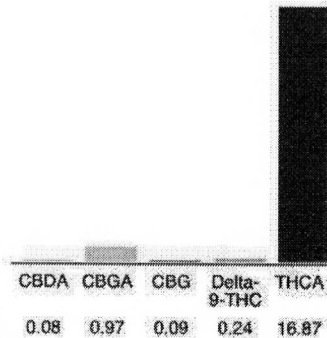
Fruity Pebbles (THCA Hemp Flower)

Plant Material: Flower

Chromatogram



Cannabinoid Profile



Cannabinoid Profile by HPLC

**0.24%**  
Delta-9-THC

**0.00%**  
CBD

**18.25%**  
Total Cannabinoids

Cannabinoid	% wt	mg/g
CBDA	0.08	0.8
CBGA	0.97	9.7
CBG	0.09	0.9
Delta-9-THC	0.24	2.4
THCA	16.87	168.7
<b>Total Cannabinoids</b>	<b>18.25</b>	<b>182.5</b>
<b>Calculated Delta-9-THC Yield</b>	<b>15.03</b>	<b>150.35</b>
<b>Calculated CBD Yield</b>	<b>0.07</b>	<b>0.70</b>

Calculated Maximum Delta-9-THC Yield = Delta-9-THC + 0.877 \* THCA  
 Calculated Maximum CBD Yield = CBD + 0.877 \* CBDA

**Marin Analytics, LLC**  
 250 Bel Marin Keys Blvd, Suite D4  
 Novato, CA 94949

415-936-6477 / sarabiancalana1@gmail.com

**Sara Biancalana**  
 Chief Scientist

This sample has been tested by Marin Analytics, LLC using valid testing methodologies and a quality system. Values reported relate only to the sample tested. Marin Analytics, LLC makes no claims as to the efficacy, safety or other risks associated with any detected or non-detected levels of any compounds reported herein. This Certificate shall not be reproduced except in full, without the written approval of Marin Analytics, LLC. Copyright 2022 Marin Analytics, LLC All Rights Reserved.



Sample 150-011823-131

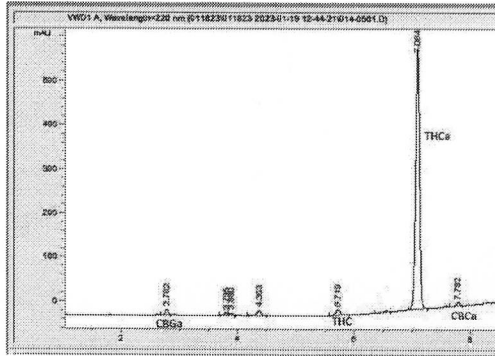
Underground Goat (THCA Hemp Flower)

Sample Submitted: 01-18-2023; Report Date: 01-18-2023

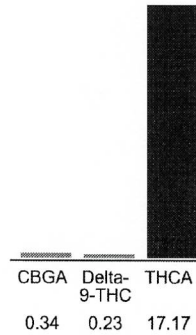
## Underground Goat (THCA Hemp Flower)

Plant Material: Flower

### Chromatogram



### Cannabinoid Profile



### Cannabinoid Profile by HPLC

**0.23%**  
Delta-9-THC

**0.00%**  
CBD

**17.74%**  
Total Cannabinoids

Cannabinoid	% wt	mg/g
CBGA	0.34	3.4
Delta-9-THC	0.23	2.3
THCA	17.17	171.7
<b>Total Cannabinoids</b>	<b>17.74</b>	<b>177.4</b>
<b>Calculated Delta-9-THC Yield</b>	<b>15.29</b>	<b>152.88</b>
<b>Calculated CBD Yield</b>	<b>0.00</b>	<b>0.00</b>

Calculated Maximum Delta-9-THC Yield = Delta-9-THC + 0.877 \* THCA  
 Calculated Maximum CBD Yield = CBD + 0.877 \* CBDA

**Marin Analytics, LLC**  
250 Bel Marin Keys Blvd, Suite D4  
Novato, CA 94949

415-936-6477 / sarabiancalana1@gmail.com

**Sara Biancalana**  
Chief Scientist

This sample has been tested by Marin Analytics, LLC using valid testing methodologies and a quality system. Values reported relate only to the sample tested. Marin Analytics, LLC makes no claims as to the efficacy, safety or other risks associated with any detected or non-detected levels of any compounds reported herein. This Certificate shall not be reproduced except in full, without the written approval of Marin Analytics, LLC. Copyright 2022 Marin Analytics, LLC All Rights Reserved.