



Sample 656-092023-009

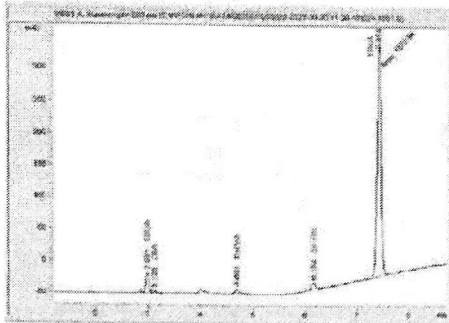
Jack Herer

Sample Submitted: 09-20-2023, Report Date: 09-26-2023

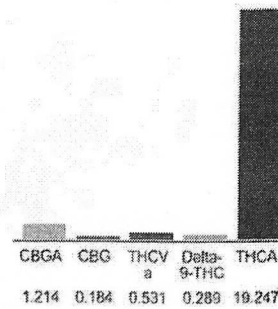
**Jack Herer**

Plant Material, Flower

**Chromatogram**



**Cannabinoid Profile**



**Cannabinoid Profile by HPLC**

**0.29%**  
Delta-9-THC

**0.00%**  
CBD

**21.47%**  
Total Cannabinoids

Cannabinoid	% wt	mg/g
CBGA	1.214	12.14
CBG	0.184	1.84
THCVa	0.531	5.31
Delta-9-THC	0.289	2.89
THCA	19.25	192.47
<b>Total Cannabinoids</b>	<b>21.47</b>	<b>214.7</b>
<b>Calculated Total THC</b>	<b>17.17</b>	<b>171.69</b>
<b>Calculated CBD Yield</b>	<b>0.00</b>	<b>0.00</b>
Calculated Total THC = Delta-9-THC + 0.877 * THCA		
Calculated Maximum CBD Yield = CBD + 0.877 * CBDA		

**Marin Analytics, LLC**  
250 Bel Marin Keys Blvd, Suite D4  
Novato, CA 94949  
833-321-TEST / info@marinanalytics.com

*Sara Biancalana*  
**Sara Biancalana**  
Chief Scientist

This sample has been tested by Marin Analytics, LLC using valid testing methodologies and a quality system. Values reported relate only to the sample tested. Marin Analytics, LLC makes no claims as to the efficacy, safety, or other risks associated with any detected or non-detected levels of any compounds reported herein. This Certificate shall not be reproduced except in full without the written approval of Marin Analytics, LLC. Copyright 2023 Marin Analytics, LLC All Rights Reserved.



Sample 150-090823-216

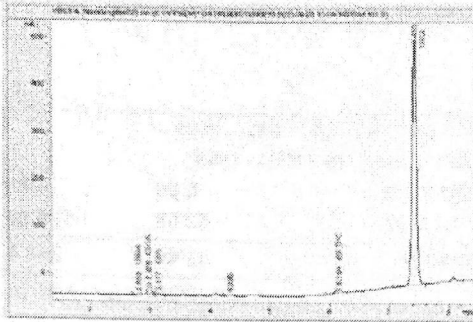
Grape Bubba (THCA Hemp)

Sample Submitted: 09-08-2023, Report Date: 09-09-2023

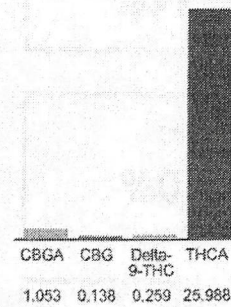
**Grape Bubba (THCA Hemp)**

Plant Material: Flower

**Chromatogram**



**Cannabinoid Profile**



**Cannabinoid Profile by HPLC**

**0.26%**  
Delta-9-THC

**0.00%**  
CBD

**27.44%**  
Total Cannabinoids

Cannabinoid	% wt	mg/g
CBGA	1.053	10.53
CBG	0.138	1.38
Delta-9-THC	0.259	2.59
THCA	25.99	259.88
<b>Total Cannabinoids</b>	<b>27.44</b>	<b>274.4</b>
<b>Calculated Total THC</b>	<b>23.05</b>	<b>230.50</b>
<b>Calculated CBD Yield</b>	<b>0.00</b>	<b>0.00</b>

Calculated Total THC = Delta-9-THC + 0.877 \* THCA  
Calculated Maximum CBD Yield = CBD + 0.877 \* CBDA

**Marin Analytics, LLC**  
250 Bel Marin Keys Blvd, Suite D4  
Novato, CA 94949

833-321-TEST / info@marinanalytics.com

*Sara Biancalana*  
**Sara Biancalana**  
Chief Scientist

This sample has been tested by Marin Analytics, LLC using valid testing methodologies and a quality system. Values reported relate only to the sample tested. Marin Analytics, LLC makes no claims as to the efficacy, safety, or other risks associated with any detected or non-detected levels of any compounds reported herein. This Certificate shall not be reproduced except in full without the written approval of Marin Analytics, LLC. Copyright 2023 Marin Analytics, LLC All Rights Reserved.



# PINNACLE ANALYTICS

## Potency Results

Sample Name: *Punch Breath*

Client:

Client Batch ID:

Pinnacle-Analytics.com  
3549 Lear Way, Suite 101  
Medford OR 97504  
P:(541)300-8217

**Sample ID:** rC-H-405-D1740

**Matrix:** Flower

**Prep Analyst:** Jeff A.

**Analysis Method:** 0630322+1 H4 4-21-2022 #1.lcm

**Sampling Method:** N/A

**Reference Method:** JCB 2009: HPLC/DAD

**Analysis Batch:** 10-25-2023 H4 302, 386, 405 Flower

Date Sampled: 10/24/2023

Date Reported: 10/26/2023

Client License:

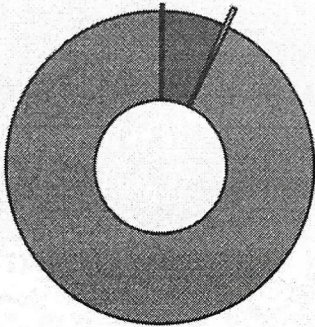
For R&D Purposes Only

<b>Total THC</b> (THCA*0.877+d9-THC)	29.3%
<b>Total CBD</b> (CBDA*0.877+CBD)	<LOQ%
<b>Moisture Content</b>	80.3%

Cannabinoid	% Weight	mg/g
CBDVA	<LOQ	<LOQ
CBDV	<LOQ	<LOQ
CBDA*	0.109	1.09
CBGA	2.3	23.0
CBG	<LOQ	<LOQ
CBD*	<LOQ	<LOQ
THCV	<LOQ	<LOQ
CBN	<LOQ	<LOQ
d9-THC*	0.19	1.9
d8-THC*	<LOQ	<LOQ
CBC	<LOQ	<LOQ
THCA*	33.2	332.0
<b>Total Cannabinoids</b>	<b>35.8</b>	<b>358.0</b>

\*ORELAP Accredited Analyte

Limit Of Quantitation: 0.1%, analyte not measured



- CBDA\*
- THCA\*
- CBGA
- d9-THC\*



These test results may not be altered or reproduced except in full without the permission of Pinnacle Analytics. These results were generated following the Oregon Administrative Rules and in accordance with the NELAP Institute under ORELAP License #4152 Report generated by Routine\_Potency\_Rev13\_8-1-2023

Kris Ford, PhD  
Lab Director